

Until 20.04.2025  
**33 % discount!**  
ErgoMove 500 set from  
**1.750 €** available!

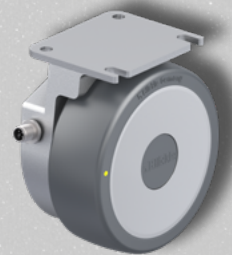
# Special offer ErgoMove 500



**ErgoMove – the system**  
control concepts, drive concepts  
and options.

In modern industry and logistics, precise processes are crucial for speed, cost control, and reliability. However, standard solutions like conveyor systems or traditional transport methods often reach their limits. This is where ErgoMove comes in – an electric drive system from Blickle that enhances both ergonomics and efficiency. Moving heavy loads manually poses health risks, causes delays, and reduces productivity. ErgoMove provides a solution.

The **ErgoMove 500** series stands out due to its exceptional compactness and can be integrated into even the smallest spaces for loads of up to 500 kilograms via plug & play. The adjustable power levels offer optimal driving characteristics for any cart weight.

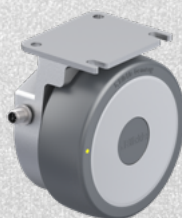






#### Technical data of the two drive wheels:

System load up to:	500 kg
Wheel-Ø:	140 mm
Wheel width:	50 mm
Mounting height of drive wheel:	150 mm
Total width of drive wheel:	85 mm
Plate dimensions of drive wheel:	100 x 85 mm



#### Variant 1:

##### Handle with rotary joystick and hand detection

##### SET EM500-1FG-PROMO

- Simple and precise operation
- Ideal for longer straight-line drives, rail applications or applications where the stability of the vehicle is not sufficient for the sensor handle



#### Options for variant 1:

##### SET EM500-1FG-PROMO

Handle with rotary joystick and hand detection

- Handle without rotary joystick
- Bracket clamps for the handles



#### Included options for variant 1 & 2

- 2 strong pressed steel swivel, wheel-Ø 125 mm, antistatic
- Safetybox including emergency stop, key switch and pre-assembled cables (3 m each) to the drive wheels and the cockpit, including 2 replacement batteries (18 V, 5.2 Ah)
- Double charger for interchangeable batteries, charging voltage 18 V, charging current 2 x 3 A
- Plug protector

Special net price variant 1:

**1.750 €**

#### Variant 2:

##### Sensor handle with pre-assembled bracket

##### SET EM500-S565U-PROMO

- Intuitive driving and steering through integrated force sensing
- Button for differential lock during straight-line driving



#### Options for variant 2:

##### SET EM500-S565U-PROMO

Sensor handle with pre-assembled bracket

- Adapter tube for extending the handlebar (790 mm)
- Base plate for attaching the console extension to a cart frame



Special net price variant 2:

**1.950 €**

Further information about the ErgoMove systems is available at [www.ergomove.com/en](http://www.ergomove.com/en)

Customised solutions for loads up to four tonnes can be realised with the Bickler ErgoMove systems of the product lines EM500, EM1000, EM2000 and EM4000. For further information, please contact your Bickler ErgoMove specialist:

**E-Mail: [ErgoMove@bickler.com](mailto:ErgoMove@bickler.com) · Phone: +49 7428 932-8000**